



# NETWORKING PRINCIPLES

**Goran Šoster**  
PREPARE Coordinator  
**Mark Redman**  
ENRD Contact Point

**PREPARE GATHERING**  
**Jahorina / Bosnia and Herzegovina, 5. September 2013**

# WHAT IS PREPARE?

The PREPARE partnership is a group of European and national non-government umbrella organizations.

The partnership was created in 1999, and has expanded as new national rural movements have joined



# WHO IS PREPARE?

- ▶ Networks for rural development in 11 EU member states: Sweden, Finland, Estonia, Lithuania, Latvia, Poland, Czech Republic, Slovakia, Hungary, Slovenia and Croatia
- ▶ Networks for rural development in two accession countries: Serbia and Macedonia
- ▶ Two EU-level NGOs: Forum Synergies and ECOVAST
- ▶ Recent focus:
  - South Eastern Europe,
  - Ukraine, Belarus, Turkey, Georgia



# PREPARE multi – national activities

## Travelling workshops

- Estonia and Sweden 1999
- Hungary 2000
- Finland 2002

## Annual Gatherings

- 2003 Slovakia (Pocuvadlo)
- 2004 Bulgaria (Chiflik)
- 2005 Lithuania (Birstonas)
- 2006 Czech Republic (Velehrad)
- 2007 Poland (Przemysl)
- 2009 Slovenia and Croatia
- 2010 Macedonia – FYROM (Ohrid)
- 2011 Serbia (Zlatibor)
- 2013 Bosnia and Herzegovina (Jahorina)



# PREPARE GATHERINGS

- ▶ **PREPARE member organisations and representatives of rural movements from target countries**
- ▶ **Involvement of high representatives from EU institutions and National Governments**
- ▶ **Combining 3 methods of work:**
  - Conference
  - Thematic working groups
  - Travelling Workshops – field visits and exchange by practitioners



# PREPARE's networking activities

- ▶ Support to strengthening civil society in **specific countries**
  - South–Eastern Europe,
  - Ukraine,
  - Belarus,
  - Turkey
- ▶ Support to PREPARE **partner organisations** and the new national networks (capacity building – small scale, flexible projects e.g. study visits, national meetings)
- ▶ **Networking** (website, newsletter)



# PREPARE activities

- ▶ Transnational exchange about Rural Parliaments (book, assistance to emerging initiatives, ERP)
- ▶ PREPARE Scholarships – trainee exchange programme financed by Fondation de France
- ▶ Cooperation with the European Commission (membership in the official advisory bodies) and national governments
- ▶ Cooperation with other European networks





# EN RD

## European Network for Rural Development







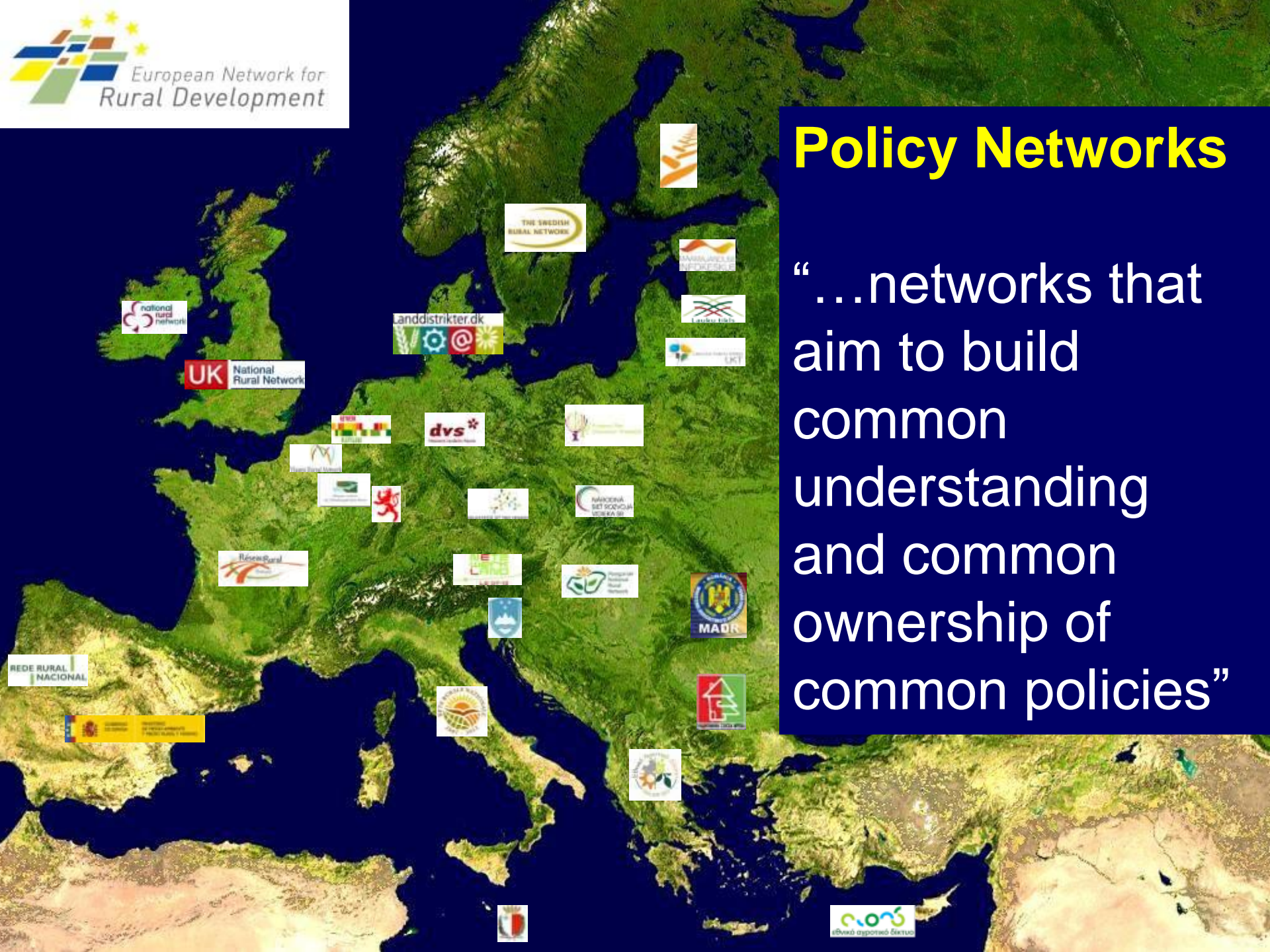






# Policy Networks

“...networks that aim to build common understanding and common ownership of common policies”



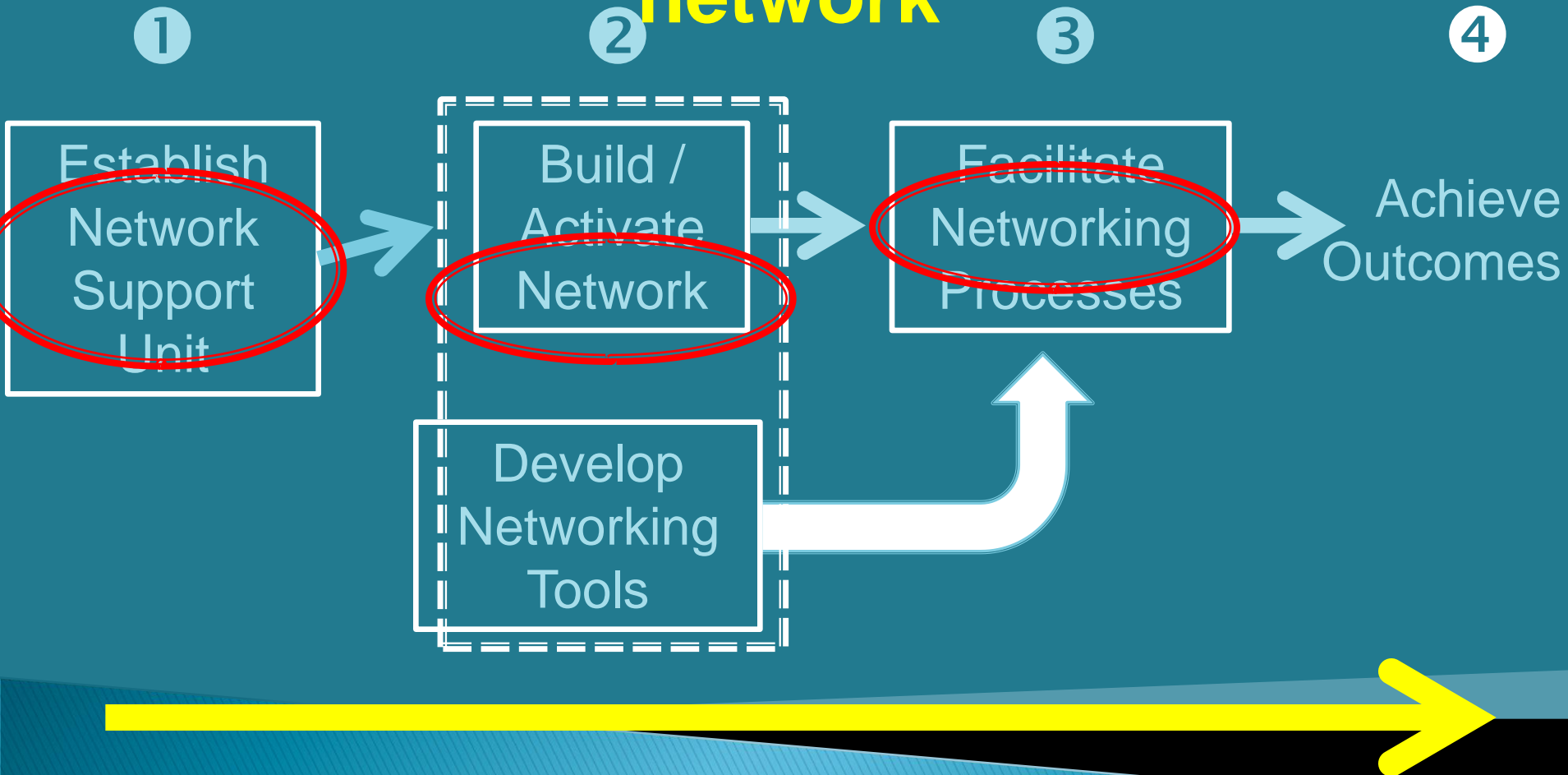


## Key characteristics of policy networks:

- **Formally established** - on the basis of some form of agreement
- **Engineered** - by public institutions
- **Facilitated / supported** - by some administrative 'entity'



# Process of 'engineering' a policy network



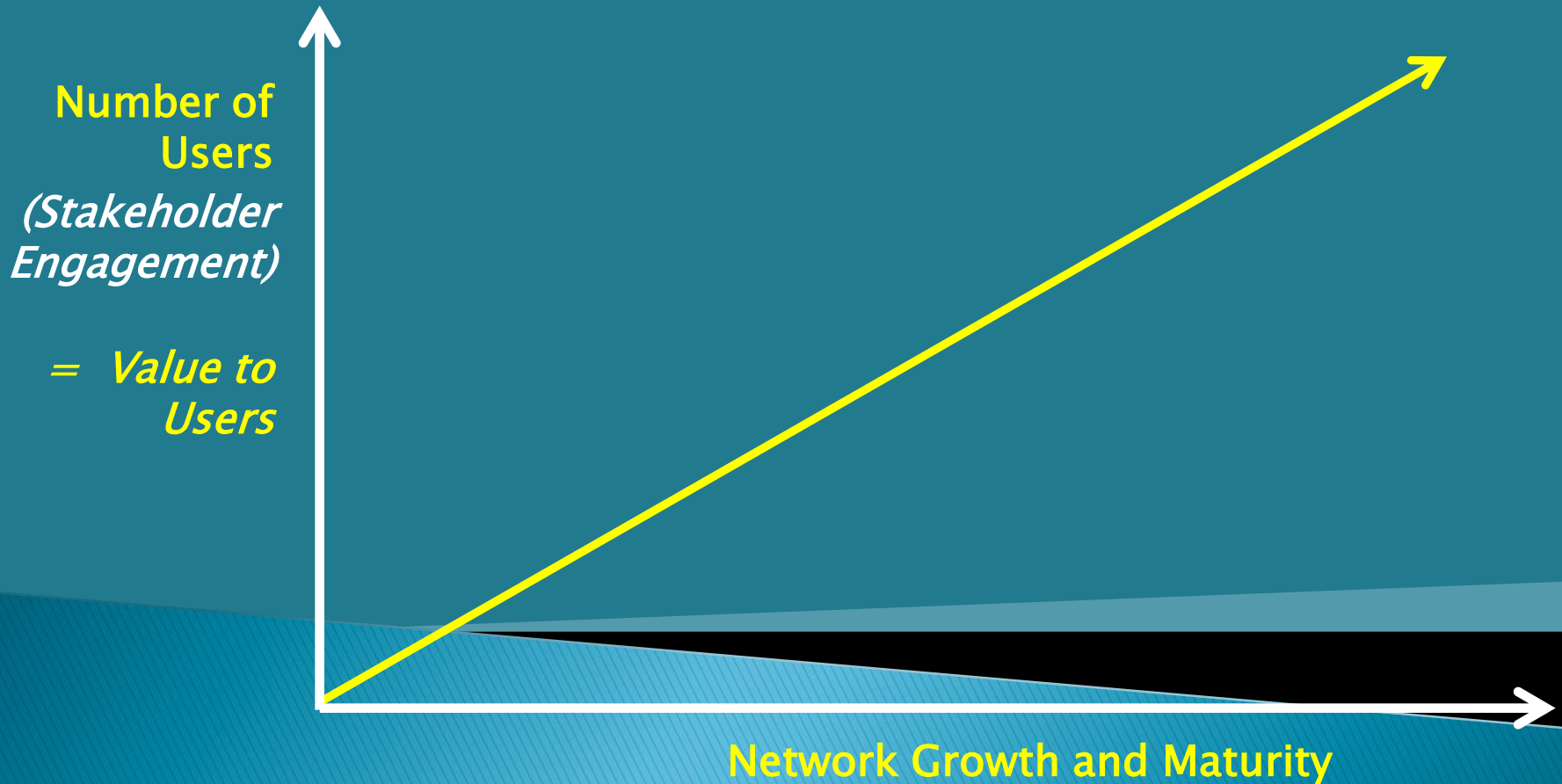
- Policy networks take **time, resources and expertise** to develop



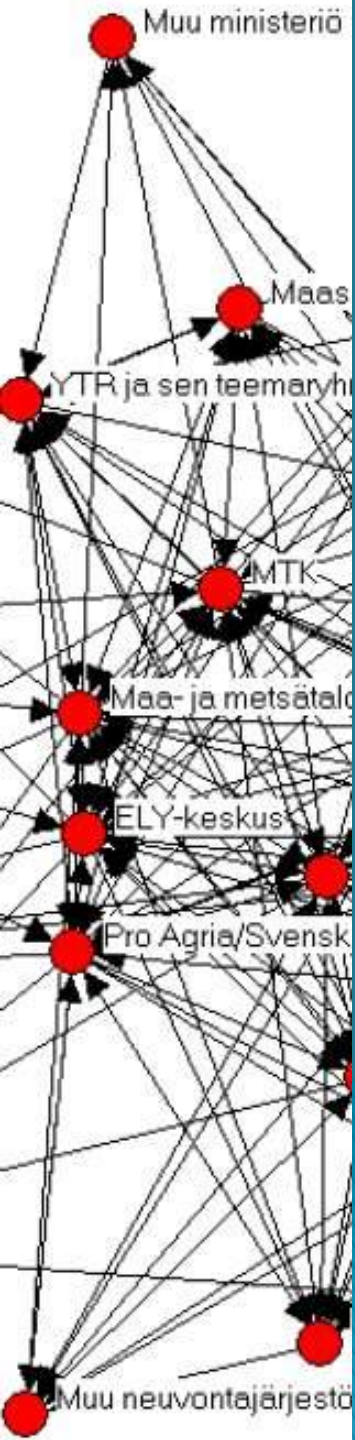
## Other key characteristics:

- **Information intensive** - transfer of know-how / experience (often have an **analytical** function)
- Just like any other network - a policy network **becomes more valuable as it reaches more users** (Metcalfe's Law)

# Simple hypothesis.....



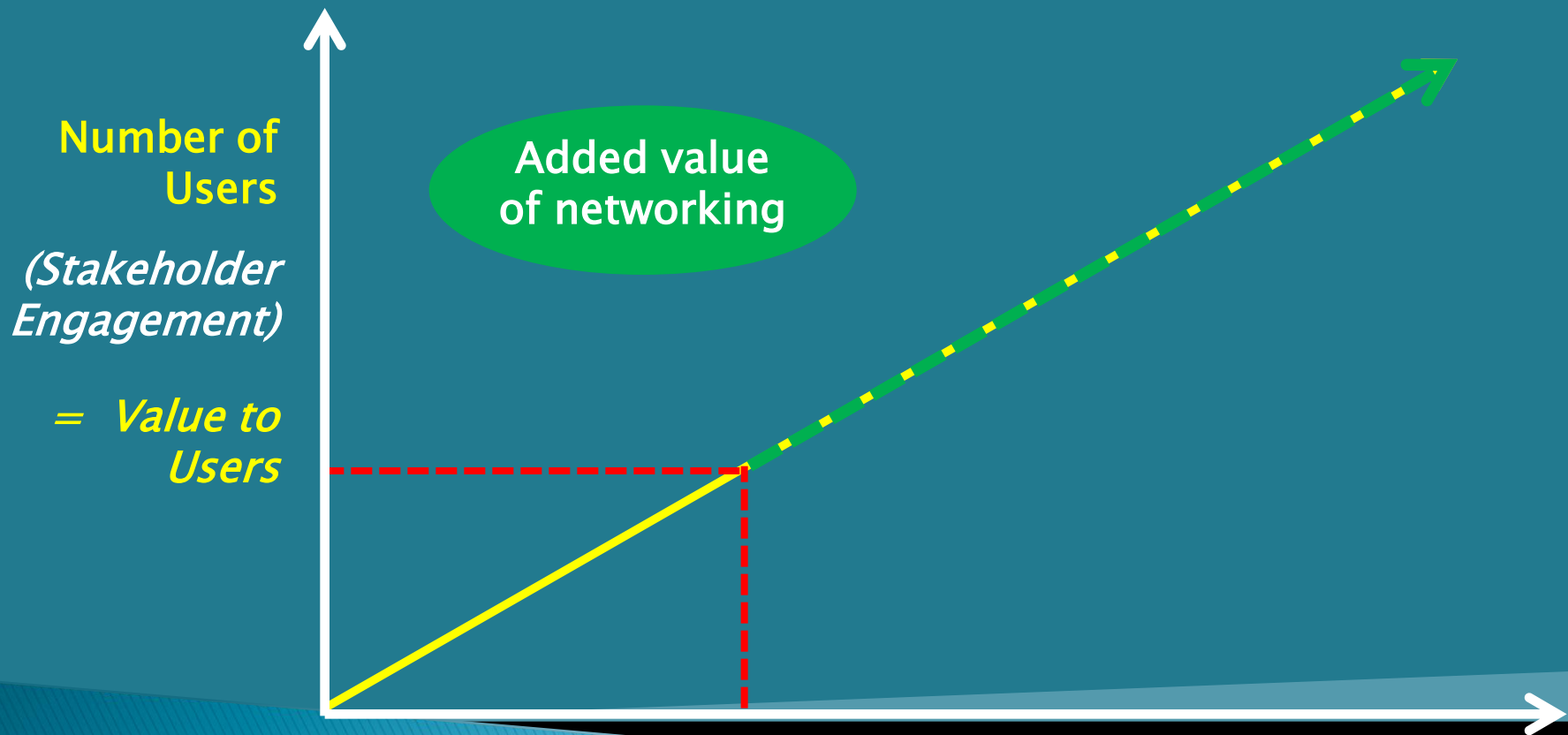




But what exactly is the ‘added value’ of a policy network.....?

*“...producing solutions and results that would otherwise **not have occurred** through a single hierarchic organisation”*

(Agranoff, 2003)



**Managing Authority**

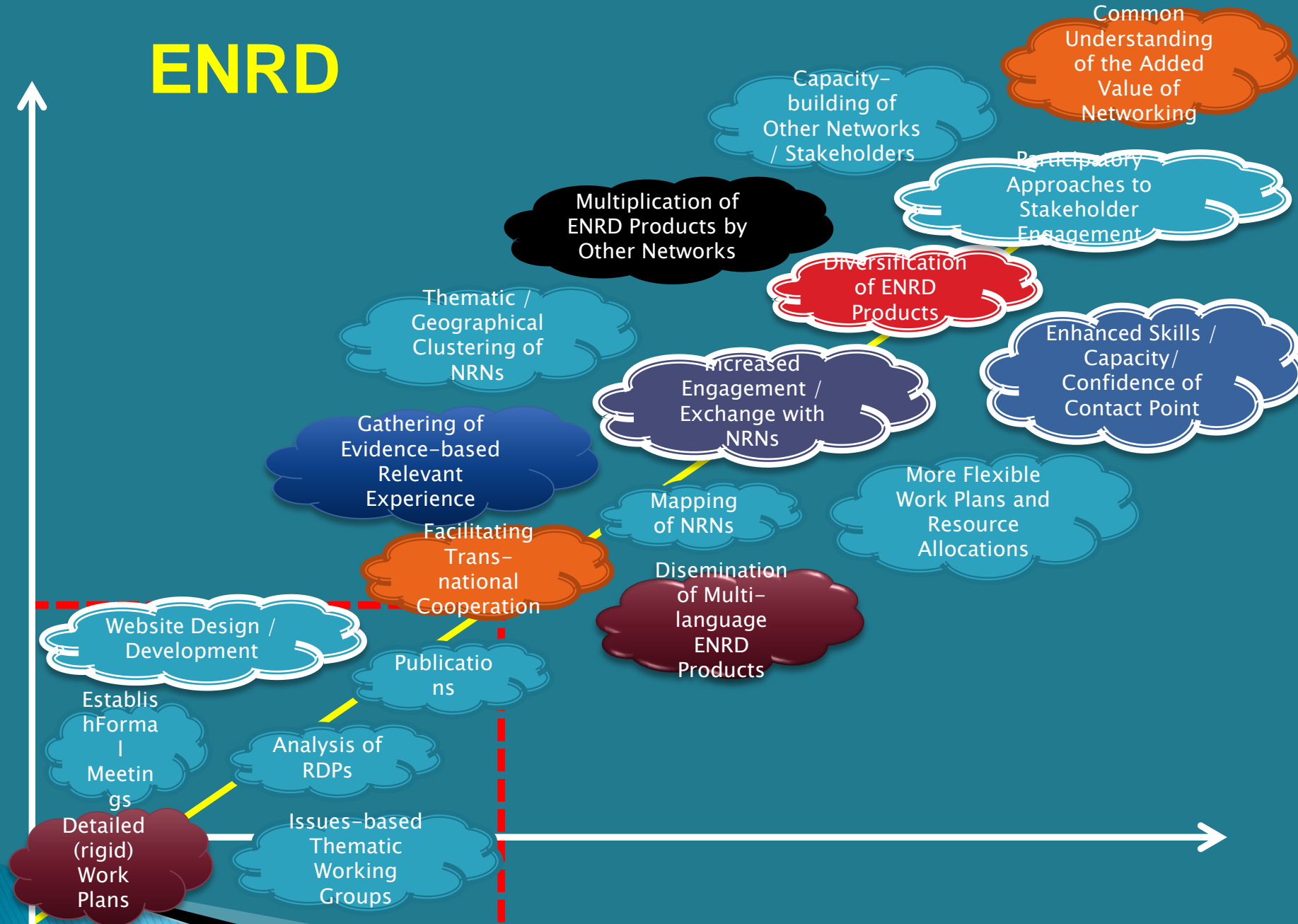
**Network Support Unit**



**Fully Functional Network**

# ENRD

Stakeholder Engagement / Value to Users

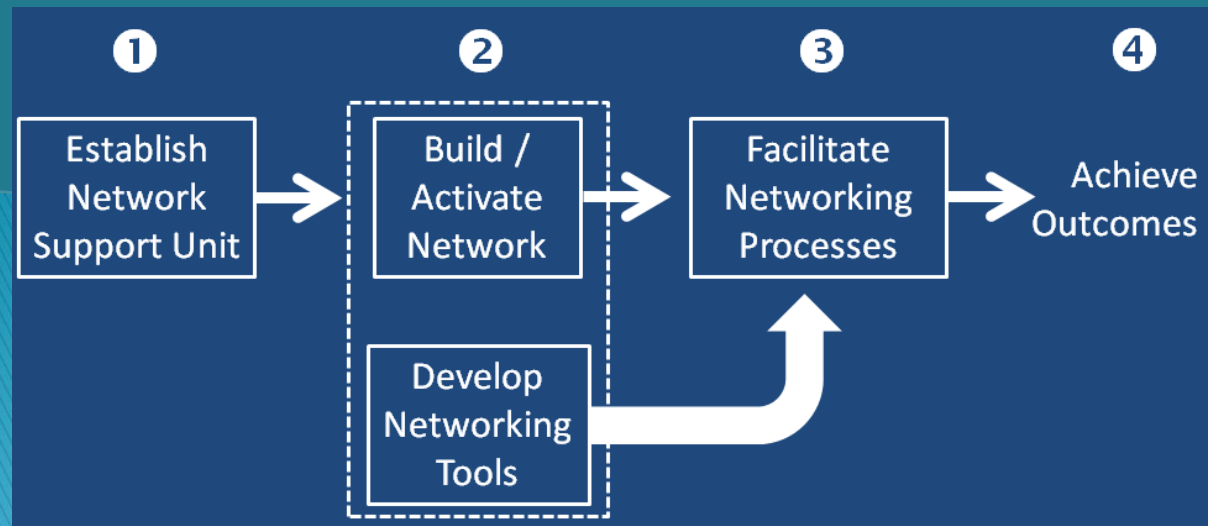
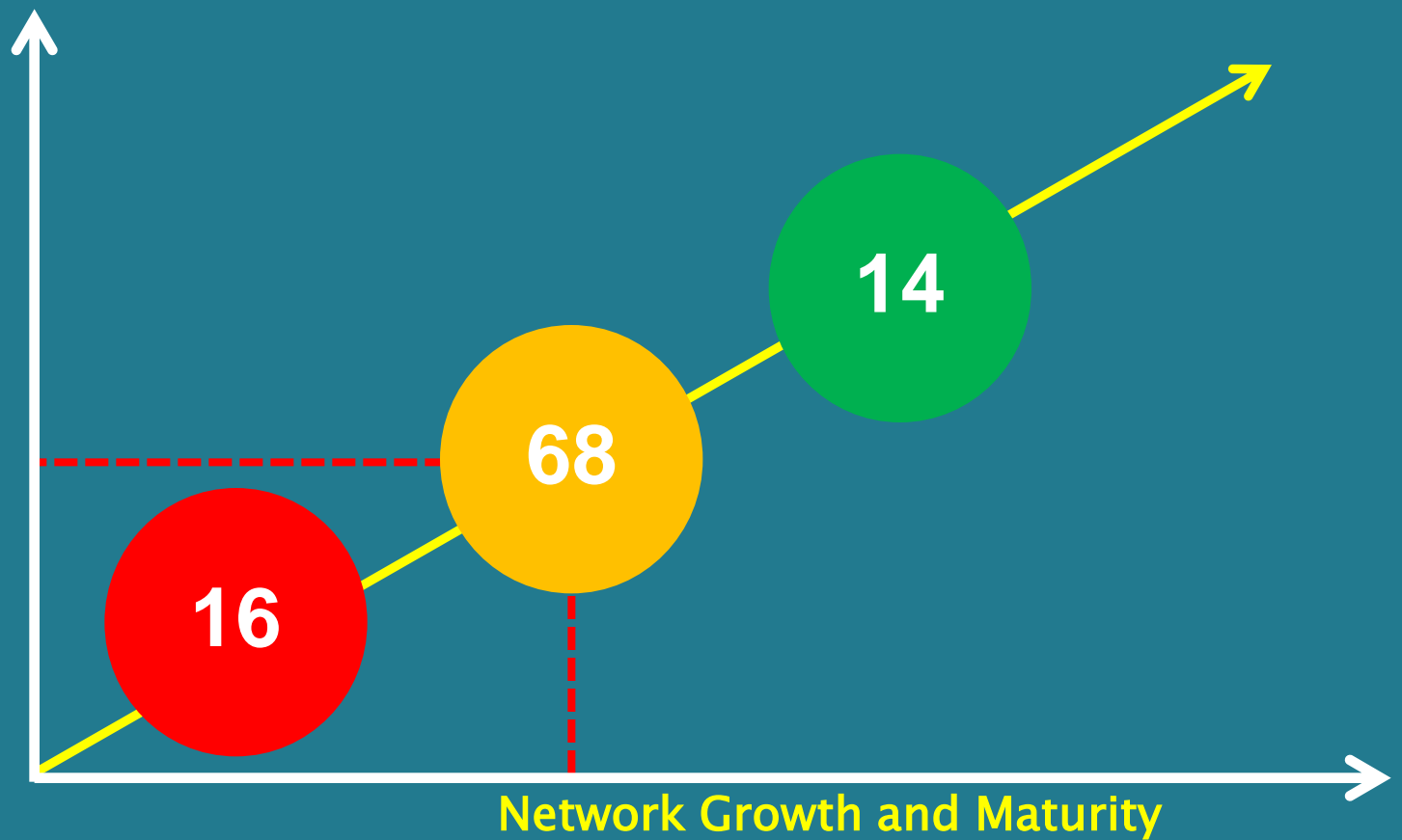


Network Growth and Maturity



**Collection of 98 network 'success stories' from 26 networks in 22 Member States (2011)**

Stakeholder  
Engagement /  
Value to Users





Investment in networks is high, but it pays back in the long-term – **give networks time to mature!**

**VISIT US AT**



**[www.preparenetwork.org](http://www.preparenetwork.org)**