



REPUBLIC OF MACEDONIA  
MINISTRY FOR AGRICULTURE, FORESTRY AND WATER ECONOMY



PREPARE Gathering Macedonia  
Ohrid, 31 August, 2010

# “THE MACEDONIAN RURAL DEVELOPMENT POLICY – PREPARING FOR EU ACCESSION”

---

Margarita Deleva (MSc), MAFWE State Advisor for Rural Development, e-mail:  
[margarita.deleva@mzsv.gov.mk](mailto:margarita.deleva@mzsv.gov.mk)

# Content-Key topics



1. Situation Analysis
2. Evolution of the RD Policy Process
3. RD Policy 2010
4. Financial Plan for RD Policy
5. Institutional set-up
6. Future challenges

# Situation analysis (1)



- total land area is 25,713km<sup>2</sup> (80 inhabitants per km<sup>2</sup>)
- prevalently mountainous (79%)
- 30% of the territory ranging between 1,000 to 2,000 meters altitude
- plains amount to 4,900 km<sup>2</sup>
- total population of 2,022 mill. in 564,296 households (mainly concentrated in the urban centres)
- Balanced gender structure
- average age of the population is 33
- 0.4% population growth
- net average migration rate - 1.45/1,000 inhabitants

## Situation in rural areas (2)



1. More than 90% of the territory
2. 1,758 rural settlements out of which 151 (10%) are abundant and 738 (50%) are with below 150 inhabitants
3. Around 58% of total population lives in rural areas
4. Aging population except in the peri-urban rural areas
5. 44% of the poor live in rural areas
6. Relatively good infrastructure but lack of services and village roads

## Situation in rural areas (3)

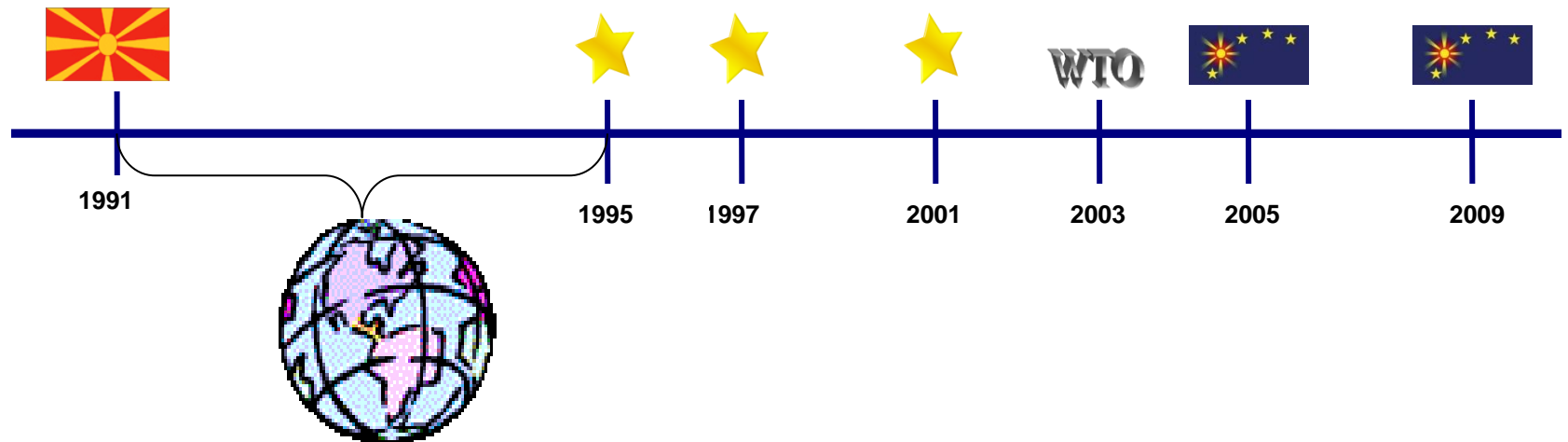


7. Agriculture is predominant activity - agricultural employment serves as social buffer during transition
8. Trend towards diversification into off-farm employment – 12% of total number of business entities' are registered in the rural areas out of which 3% are in agriculture

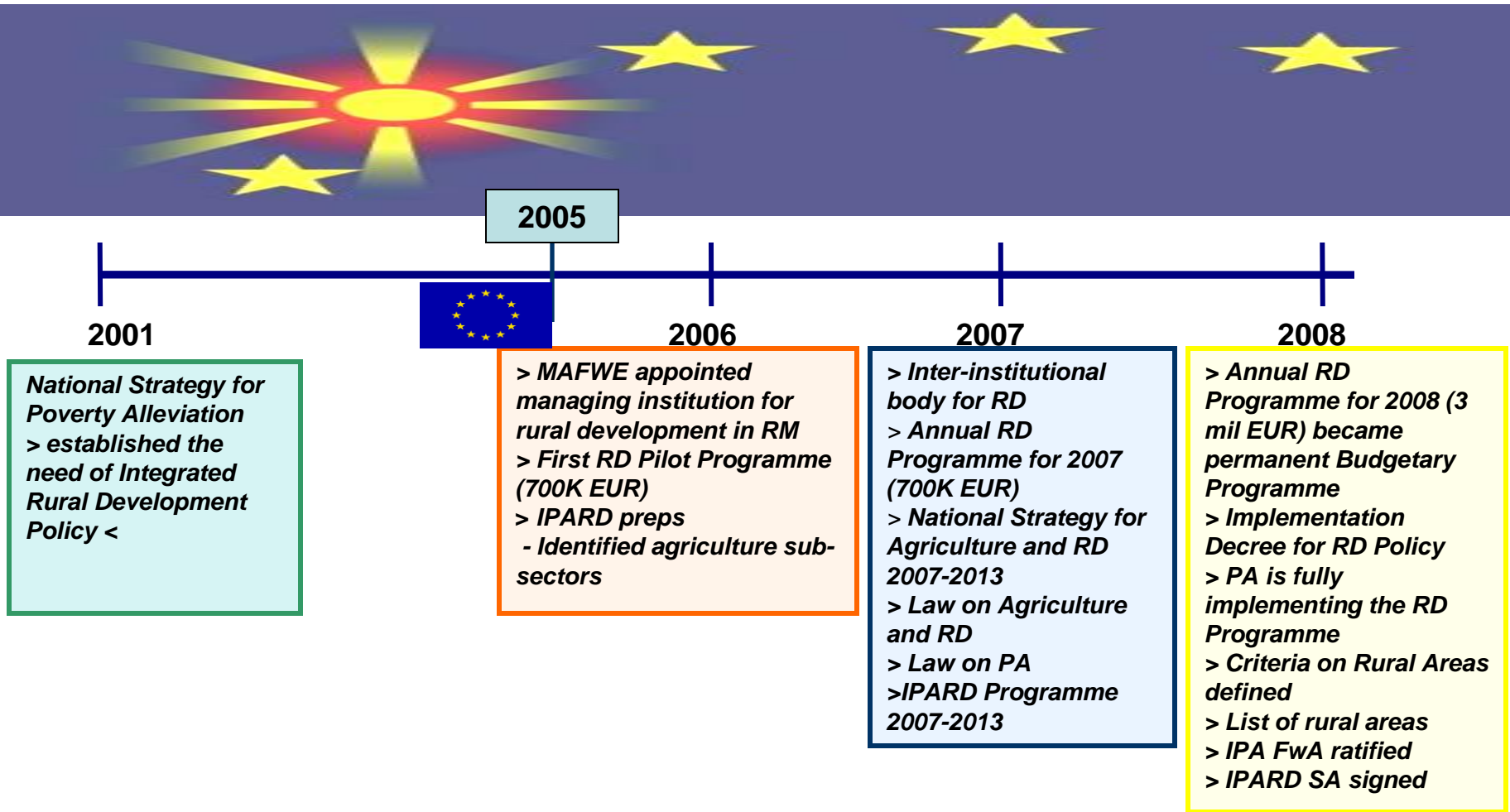
# Evolution of the RD Policy Process (1)



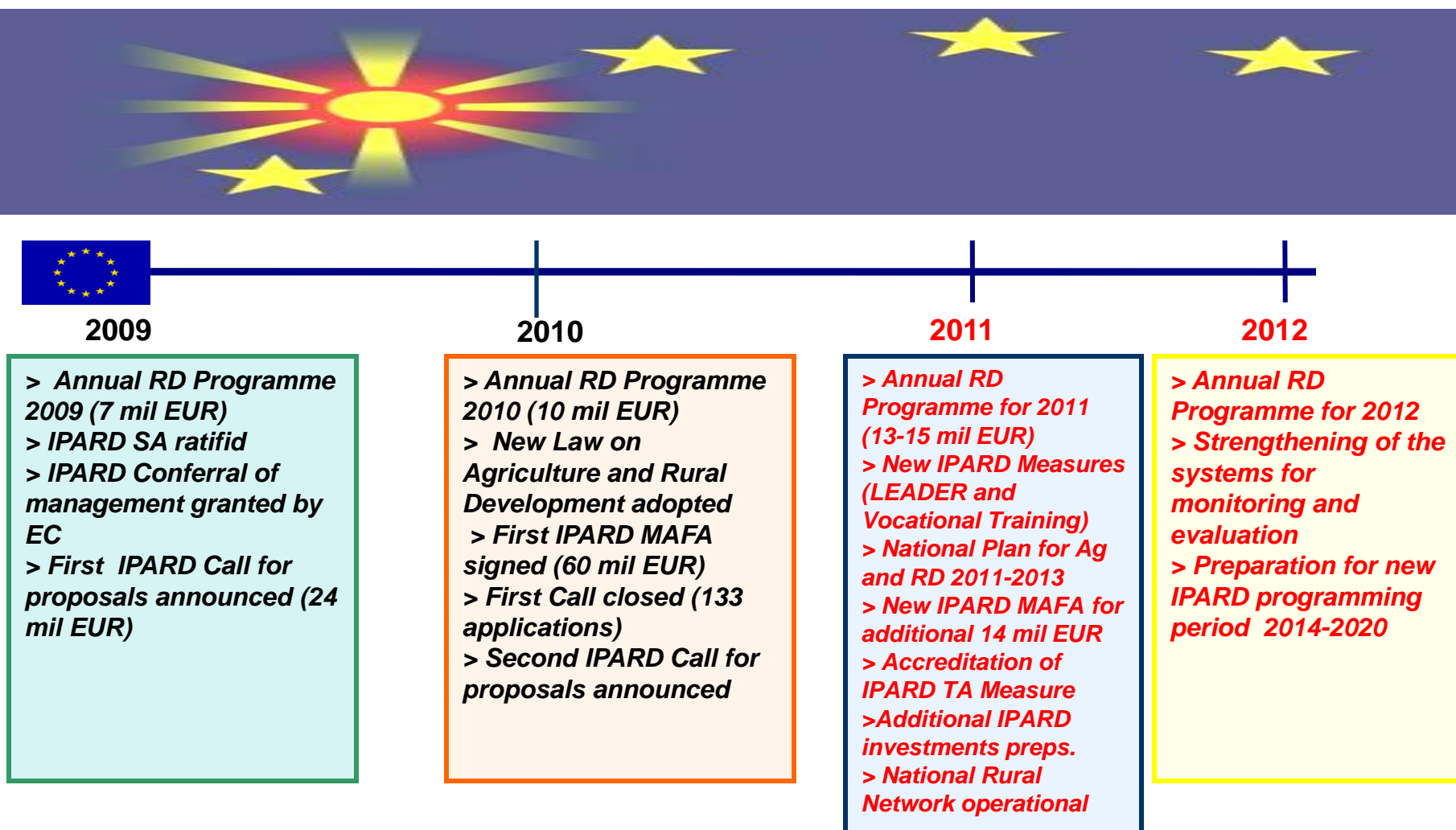
## Calendar of key political events



# Evolution of the RD Policy Process (2)

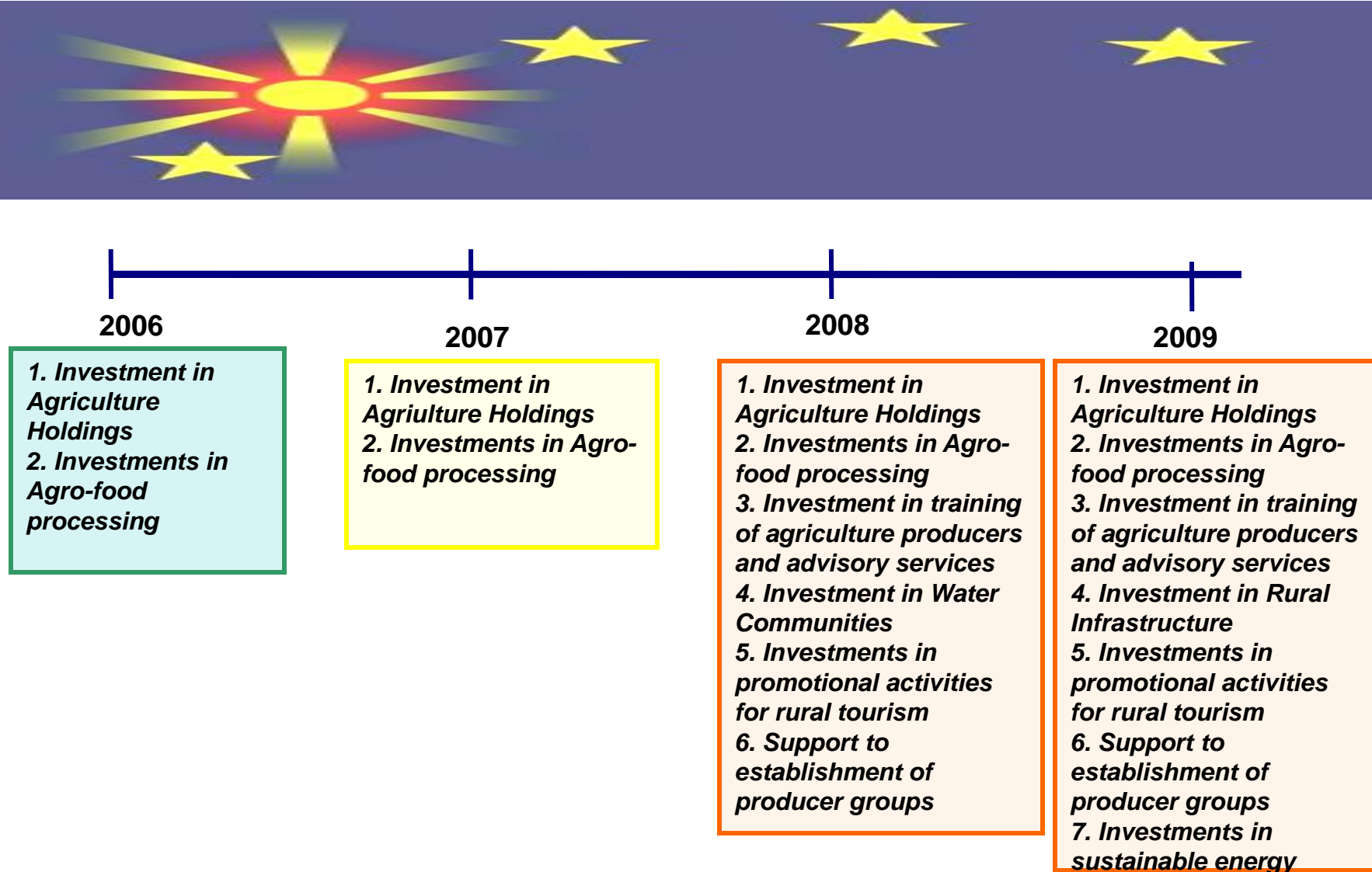


# Evolution of the RD Policy Process (1)





# Evolution of the RD Policy Process (2)



# RD Policy 2010 – NRDP (1)



1. National RD Programme Budget 10 mill EUR
2. New measures in NRDP 2010
  - Establishment of infrastructure for ‘panting’ (hiking) trails and biking roads in rural areas
  - Technical assistance for establishment of new agriculture cooperatives (training for managers, study tours for the potential cooperants etc.)

# RD Policy 2010 – NRDP (2)



## 3. Aid intensity in NRDP 2010

***Co-financing rate is in general 50% except for the following cases***

- 55% for young farmer and women (60% for investments in sustainable energy sources)
- 60% for investments in hilly-mountainous rural settlements above 700m altitude (65% for investments in sustainable energy sources)
- 65% for young farmer and women in hilly-mountainous rural settlements (70% for investments in sustainable energy sources)

## RD Policy 2010 – NRDP (3)



- 80% for investments in irrigation systems managed by Water Communities
- 70% for rural roads investments and 80% for rural roads in hilly-mountainous rural settlements
- 70% for provision of training to farmers and for publishing of maps, brochures, booklets, books or marking panting roads for particular rural area as support to promotion of rural tourism
- 100% for promotion material and signing posts for rural tourism
- 100% for TA for establishment of cooperatives

# RD Policy - IPARD Programme 2007-2013



## IPARD PROGRAMME 2007-2013

**Measure 101** Investments in Agriculture Holdings (vineyards, orchards, vegetable growing, livestock breeding for milk and meat)

**Measure 103** Investments in processing and marketing of agri-food products (wine, marketing of fresh fruit and veg., processing of fruit and veg., milk collection, dairy production, slaughterhouses)

**Measure 302** Diversification of rural economic activities (support to micro-enterprises i.e. establishment of on and off-farm processing activities and support to traditional handicraft; support to rural tourism i.e. establishment of accommodation capacity in rural areas including catering and recreational facilities)

# RD Policy -IPARD Programme 2007-2013



Aid intensity: 50% public aid (75%+25%)

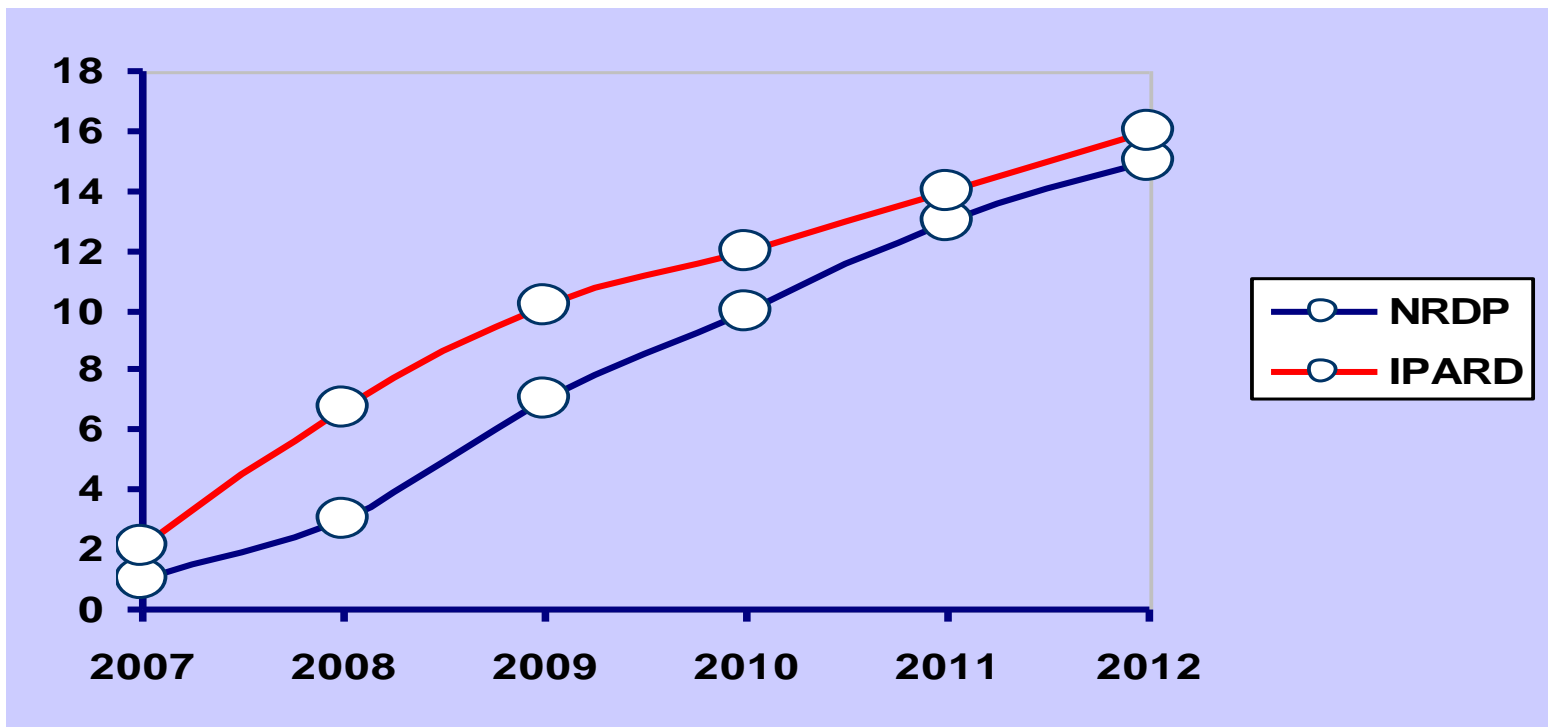
55% for young farmers support

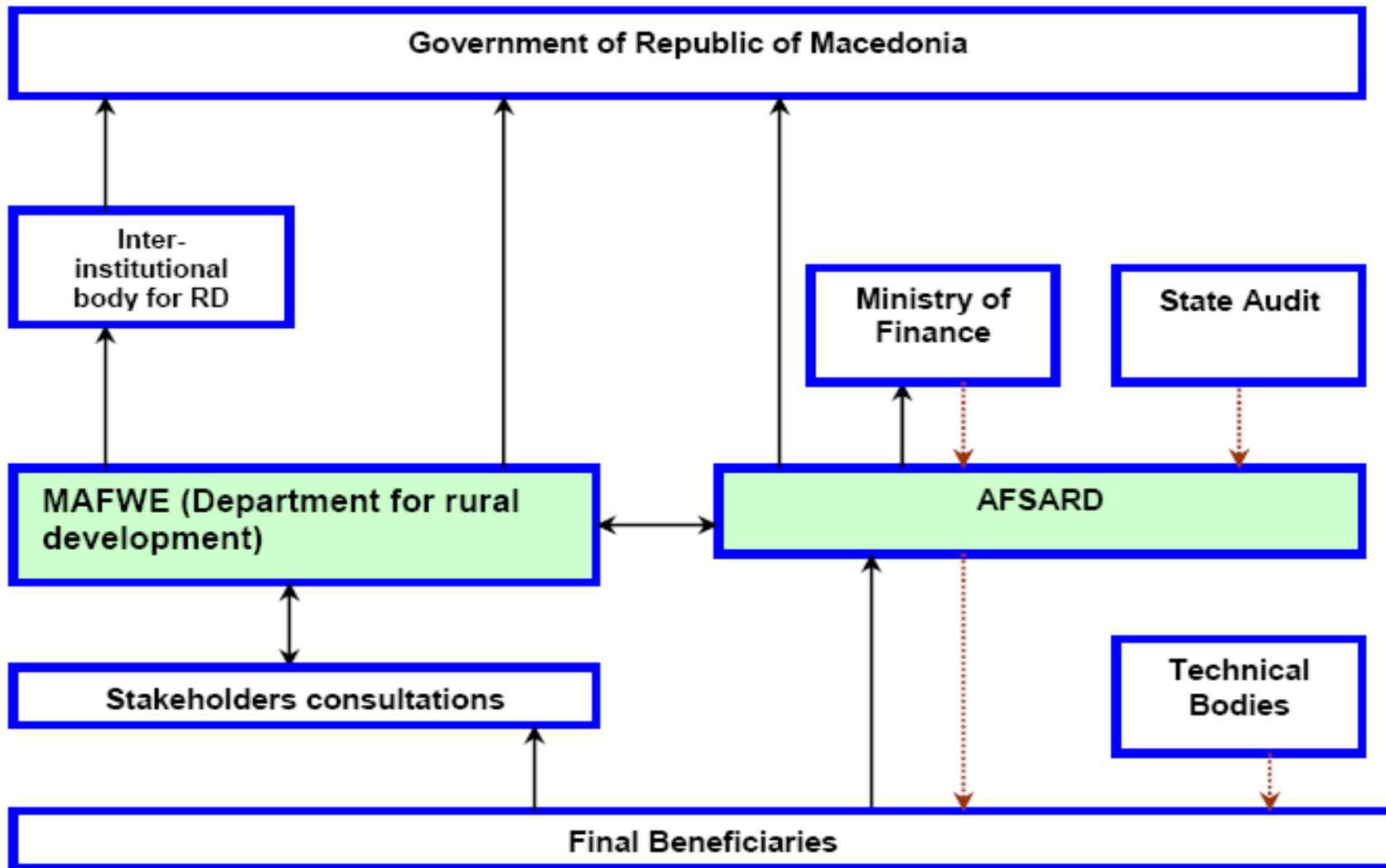
???

60% for mountainous regions

65% for young farmers in mountainous regions

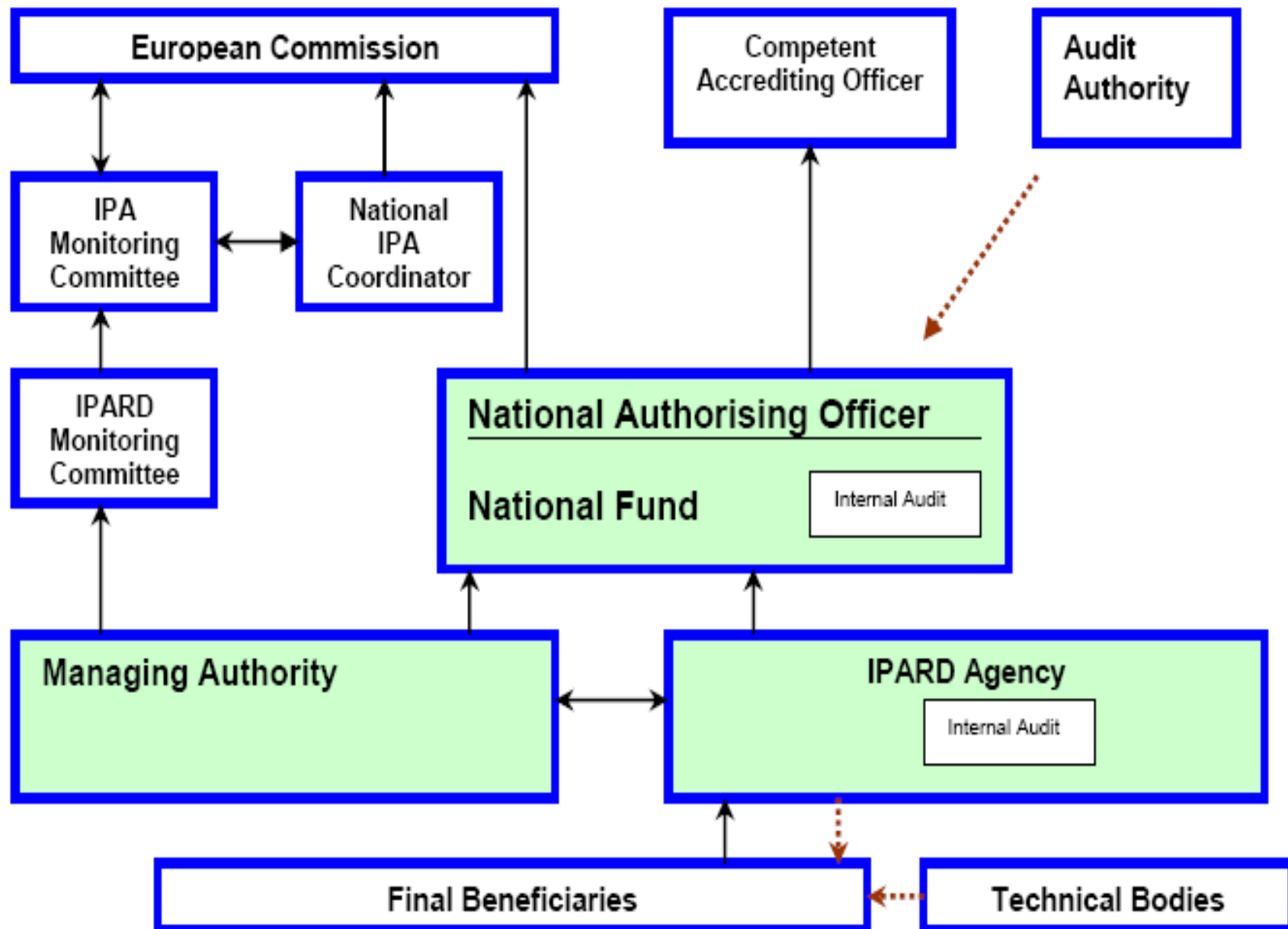
# RD Policy Financial Resources





- reporting
- ...▶ audit, control
- management and control systems





# Future challenges (1)



## Priorities (NPAA-RD thematic area)

### *Approximation of the RD policy and legislation:*

- Legal acts for implementation of the RD provisions in the new Law for Agriculture and RD
- National strategy for training in agriculture
- Adoption of National Programme for Agriculture and RD 2011-2013
- Revision of NARDS (+legal update)
- Activities for preparing Agri-Environmental Programme and measures
- LEADER Strategy and procedure for selection of LAGs and their Local RD Strategies
- Action Plan for operations of National Rural Network

# Future challenges (2)



## Priorities (IPARD)

### *Introduction of new measures:*

- Under the current IPARD programme (2007-2013)
- Preparing for for IPARD '2' 2014-2020

### *Followed by:*

- Accreditation of TA measure in 2010
- Increasing the absorption capacity of IPARD funds by strengthening the existing measures and adding new measures to the Programme
- New Programme modalities towards new CAP 2014-2020

# THANK YOU FOR THE ATTENTION



**You can find useful information related to RD support programmes and IPARD on the following web-sites:**

[www.mzsv.gov.mk](http://www.mzsv.gov.mk)

[www.ipard.gov.mk](http://www.ipard.gov.mk)

[www.ipardpa.gov.mk](http://www.ipardpa.gov.mk)